



# FISHBOURNE CHURCH OF ENGLAND PRIMARY SCHOOL



Only one you

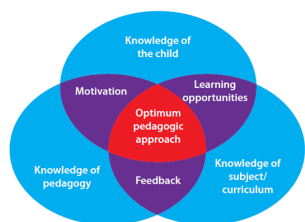
Dear Families,  
It has been just brilliant to see all the children returning safely to school after the summer break looking smart and super proud of coming to Fishbourne Primary School. Our huge thanks to you for supporting the children to be such excellent ambassadors of our school. We have really enjoyed seeing all the photos of the children reading over the summer holidays and hearing stories of adventures both close to and far from home! During the first couple of weeks of term we have been revisiting our school motto: 'there is only one you in this great big world... make it a better place' and making our own pledges about how we can do this!

Everyone has settled quickly into their new classrooms and our youngest children have decided that they would like to be known as Hippos class. A really warm welcome to all our new children and their families to our learning community. We hope you will be extremely happy at Fishbourne Primary. It was lovely to see the children working with their parents to make their fish to join our shoal, reminding us all of our uniqueness.



The start of a new academic year is always an exciting time with many resolutions made by children, staff and parents alike! It's also a great time to reflect on the year that has passed. We are delighted to have been through our Ofsted and be able to move forward with our priorities for the year ahead! We were delighted

to be able to share with Ofsted when they visited our Learning Map which was at that time in the finishing stages. Our leadership time, in consultation with all staff and governors, worked incredibly hard to create this during the last academic year. The purpose is to provide a daily reminder to our team in school about our core purpose as a school... it's our map to guide us on our way! The Fishbourne Learning Map is on our school website under ABOUT US for you to be able to view in greater detail. We would like to say a huge thank you to Vanessa Marchant-Williams who collaborated with Emily Harris and our middle leadership team. As a school that is value driven, we are so thrilled with this document and very proud of the journey we have been on over the last four years. Visitors to our school can see the map up in our staffroom! Do feel free to pop in to have a look.



We are so excited about the year ahead and have a great deal to look forward to. We have a very clear sense of the next steps of our journey towards irresistible learning and have two clear focuses for our development.

The first of these is to ensure that our children gain a deep, long-term, secure and adaptable understanding of mathematical concepts. We have the opportunity to work alongside the National Centre for Excellence in the Teaching of Mathematics (NCTEM) and really look forward to continuing this journey.

Our other key focus is on developing our non-core curriculum overview to give our teaching team a more comprehensive document from which to work when they are planning learning experiences. This will ensure that as the children move through the school, knowledge and skills are being developed and built upon in the same high quality way they are for English and maths.

You can read more about these developments on our school website and we whole-heartedly encourage you to do so!



The first few weeks of term have been jam packed with exciting events. Tiger class (Year 5) have already been off on residential and had a wonderful time at CYE. We value our links to Christian Youth Enterprises on Chichester Harbour enormously and know that

our children have an incredible experience during their time there. We are often asked why we take our children on residential at the beginning of the academic year. We believe that it gives a great opportunity for the children to form as a team and for staff to get to know the children in their year group really well. Meerkats head off to Fairthorne Manor next week. My huge thanks to all our staff and governors who generously volunteer their time to go off on these residential visits! It requires huge commitment from our team to facilitate these wonderful adventures for the children and we are very grateful to our staff (and their families!!) for the time they give to our school making these things happen.



Sophy Henn

We were delighted this week to welcome Sophy Henn to our school for her first visit as Fishbourne Primary School **PATRON of Reading!** We were very excited because we



have always wanted to have a special relationship with an author and Sophy is the absolutely perfect fit for our school. If you haven't read any of her books, start with SUPER DUPER YOU and you will realise how it came to be that we approached her! Sophy is a writer and an illustrator so our children are very fortunate to have a privileged insight into the experiences of both! The children all met Sophy during the course of

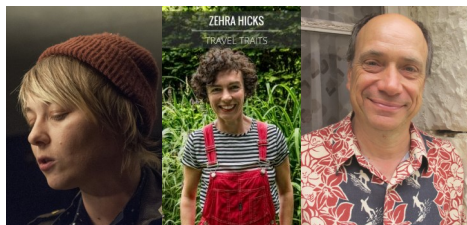
the day and were introduced to our magical postbox that they will be able to use to send mail back and forth to Sophy! They will be able to ask her questions, ask for feedback on pieces of their own writing, enter competitions, share great ideas and so much more! We now have a special page of our website dedicated to Sophy where you can see when Sophy visits and find out more about her!

**Please try to remember with everything you do...  
Be Bold. Be Proud. Be Brilliant.  
A super-duper you!**

We are very excited about our FIRST whole school learning experience of the academic year. Our week will begin with the children being HOOKed into their learning with a visit from performance poet, Emma McGordon. The END GOAL for the learning experience will be to perform for an audience. During the week, they will also meet two authors brought to us by the Chichester Childrens Book Festival—those children in Key Stage 1 will meet Zehra Hicks and those in KS2, Roger Stevens. We are really looking forward to the week and seeing



the children having an opportunity to learn how to perform by some very talented visitors. Look out for updates throughout the week on the NEWS section of the school website.



Our Meet the Teacher meetings have been happening over the last couple of weeks and these have been a great opportunity to hear all about the learning



opportunities on offer during the year. Each newsletter I have read coming home to you is packed full of original, exciting and carefully thought through ideas designed to make learning irresistible. **For the next ten months, your child has been partnered with a teaching team who will give everything for them. Please treat them with care - encourage and support them. Help them to continue to love teaching!** Please work in partnership with us to do the very best we can for your child by supporting the work we do in school.

We are delighted to welcome three new members of staff to our school community.



Miss Jenny Taylor is a Learning Support Assistant who will be joining the Year 2 team full time. Jenny came to Fishbourne Primary as a child and is very excited to re-join the learning community as an adult!

Mrs Janette Mitten will be joining our Year 3 team full time to support learning in the classroom. Janette has lots of experience of being a Learning Support Assistant and will be a super member of our staff team! You can find out more about all our new members of staff under the About Us, Staff Team part of the website!



Mrs Vicky Willavise will be working with us every Thursday afternoon, providing cover for Mrs Williams and Mrs Goodman to have their planning and preparation time. Vicky will be teaching French during this time and we are very excited that we will have top quality French provision for our children throughout the school.



#### Autumn term:

Fri 20th - Rockstar Day!  
 Mon 23rd - Fri 27th: Year 6 to Fairthorne Manor  
 Mon 30th Sep - Fri 4th Oct: PERFORM Whole School Learning Experience and Children's Book Fest  
 Thu 3rd Oct: Full Governing Body Meeting 6pm  
 Tue 12th Nov: Remembrance Service 10am  
 Wed 13th Nov & Wed 20th Nov: Learning Review meetings 3.30-6pm  
 Fri 15th Nov: School Disco FOFS  
 Fri 22nd Nov: Quiz Night FOFS  
 Mon 9th Dec: Whole School Learning Experience  
 Fri 13th Dec: Christmas Lunch (Chartwells) and Christmas Jumper Day  
 Wed 18th Dec: Carol Service at the church (children only)  
 Thu 19th Dec: Carols Around the Tree 2.30pm  
 Fri 20th Dec: INSET Day  
 Mon 6th Jan: INSET Day  
 Tue 7th Jan: First Day of the Spring Term



#### INSET Days for 2019/20

Monday 2nd September  
 Friday 20th December  
 Monday 6th January  
 Friday 22nd May  
 Monday 20th July



We have decided to dip our toes into the world of Twitter! Many of our teaching team are keen tweeters and there is a wealth of support for the education community on Twitter. Inspired by Sophy Henn, we decided we would set up a Twitter account for our school which you are warmly welcome to follow. It will be a lovely way for our children to follow Sophy via our school Twitter account.

Please do find us and start to follow... @FishbournePrim1  
 You could also follow Sophy Henn @sophyhenn

AT FISHBOURNE CHURCH OF ENGLAND PRIMARY SCHOOL, WE NURTURE OUR LEARNERS TO BECOME...

