



September 2024

FISHBOURNE CHURCH OF ENGLAND PRIMARY SCHOOL



Only one you

Welcome Back!

Dear Parents,

A very warm welcome back to the autumn term at Fishbourne Primary and it's especially lovely to welcome our brand new Pufferfish and their families. Our Pufferfish are settling into school routines beautifully well

and it's lovely to see new friendships formed both within their classrooms and beyond! It is wonderful to see the children returning looking smart and proud to be in their school uniforms. Thank you for ensuring you children are arriving in the correct uniform and on time. We have got off to a super start!

This is also a lovely opportunity to welcome new members of our staff team: Miss Amy Furlong who is teaching Year 4, Mrs Kate Sheldon who is our new School Business Manager and Mrs Chris O'Donnell who is joining our midday meals team.



We have hit the ground running at Fishbourne with lots of incredible opportunities already being enjoyed by our little fish. We have already had sixty of our oldest children out on residential visits. Our Year 6 children were based at Fairthorne Manor for an action-packed week of outdoor activities ranging from paddle-boarding to abseiling. Our Year 5 children had an overnight visit to CYE on Chichester Harbour where they enjoyed kayaking, sailing and tunnelling. We deliberately book these residential visits for the beginning of the academic year as team-building opportunities for children and staff to get to know each other really well. When asked their highlight of their time at school, they very often cite that their residential was the best! Our hugest thanks go to the teams of adults who take the children away—they really do go above and beyond to take the very greatest care of the children while also throwing themselves into every activity!

At Fishbourne Primary, we teach most of our curriculum through our learning experience approach. Each learning experience is rooted in just one area of the non-core curriculum. This allows children time to explore and develop key knowledge and skills in these areas. Reading and writing underpin each learning experience and are used as tools to communicate the key concepts to a wider audience. It may be appropriate to use another area of the non-core curriculum to enrich the learning taking place but it would not be a key focus, for example using art to understand and communicate historical concepts.

An exciting and engaging **hook** into learning makes the experience simply irresistible and the children know from the outset exactly what

they are setting out to achieve in the form of an **End Goal**. A **baseline** that has been warmed up provides the opportunity to ensure that the **steps of learning** are personalised, taking into account the starting point of each child to achieve the highest possible quality outcome.



There have already been incredible HOOKS into learning taking place across school... Cheetah's are historians hooked into their learning about the Stone Age with a visit to Butser Farm where they wattle fences, made clunch to build walls and created spiral rings. Cheetahs had a super day and were back in time for our Golden Learner assembly having been outstanding ambassadors for our school. What a super start to their learning.

Crocodiles and Chameleons were hooked into their learning experiences with a drumming workshop - Crocs are scientists learning about sound and Chameleons geographers learning about Kenya.

Meanwhile, Elephants and Hippos have been to New Park Cinema for their own private viewing of Kensuke's Kingdom which they are using as their whole class text. Each of these visits and visitors have been purposefully planned into your child's learning to create irresistible experiences on which to hook their learning.

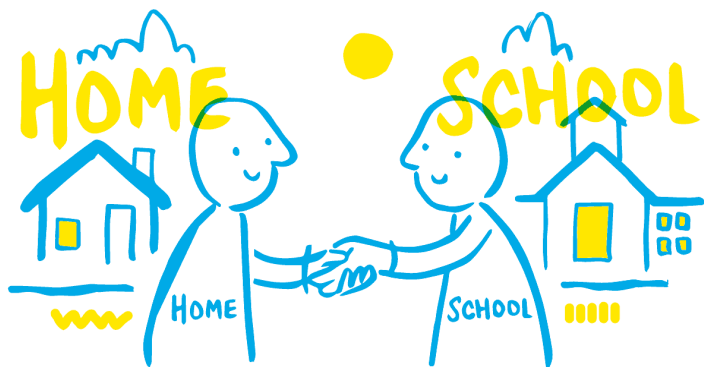


Meanwhile back at school, our youngest children have been enjoying playing in their wonderful new outdoor space in the late September sunshine. This space has transformed learning for our littles fish and it has been joyful to see the children's purposeful, collaborative play. We have been particularly proud of how beautifully Shark class have been teaching our new Pufferfish how to use the space and how patiently they have played alongside!



Barney, our school dog, has also been settling back into the autumn term and finding his paws! He has enjoyed meeting our Pufferfish, going out at playtimes for lots of attention and meeting his newest Dog Mentor children. Also this term, we have groups of children benefiting from: a nurture group run by Willow Tree Forest School, a wellbeing group at Tuppenny Barn and Festival Fridays run at Chichester Festival Theatre. Children have been carefully identified for each

of these wonderful opportunities by the adults in school who work most closely with them. We know that there is a real need for these additional provisions and are so grateful to all those who work with us to provide them.



Partnership:

A huge thanks to those of you who attended our recent Meet the Teacher meetings! It is a huge encouragement to us to see parents actively engaged with school life and supporting their children by finding out more about their learning. We value your partnership enormously and it has tremendous impact on your child's learning. The Education Endowment Fund (EEF) concluded after significant research that: *'The average impact of parental engagement approaches is about an additional four months' progress over the course of a year. There are also higher impacts for pupils with low prior attainment.'* WOW! What an incredible impact parents can have on their children's learning! There are lots of ways you can achieve this and we urge you to be interested in your children's learning, to support and value home learning, to encourage your children to love reading, to speak positively about school, to make sure children have had a good sleep and arrive feeling ready for the day!

When your children started their adventure with us at Fishbourne CE Primary School, you signed our home-school agreement in which you agreed to be:

- ***Determined** to champion my child to become the best they can possibly be.
- ***Positive** in my attitude towards our school and all members of the school community—showing respect for all.
- ***Collaborative** in working closely in partnership with the school to support my child's learning within and beyond the classroom.
- ***Reflective** by attending learning review meetings in order to find out about the progress my child is making on school and sharing learning journals with my child when they come home.
- ***Courageous** by making the school aware of any concerns or problems that might affect my child's learning or behaviour at school.

In return, we are determined to do all we can to support you to work closely with us to support your children. We are passionate about ensuring the culture in our school is enabling partnerships to be effective and we want to provide as many opportunities as we can for our families to be able to work in partnership with us.

Coming up this term, we have:

Cuppa and Chat on Friday 4th October at 8.50am—an opportunity to pop in for an informal cuppa and to talk about what's working well and how things could be better.

Six Weeks In Meeting for Pufferfish Parents on Tuesday 15th October starting at 8.45 to 10am - an opportunity to find out more about what your children have been up to at school and how you can support them at home.

Phonics Workshop for Shark Parents on Wednesday 16th October starting at 2.15pm to the end of the school day - an opportunity to find out more about how we teach phonics, how you can support at home and early reading.

Learning Review Meetings for all families on Wed 6th and Thu 7th November - an opportunity to reflect together with your class teacher on how well your child has settled in their new class and how you can support them at home.

Friends of Fishbourne School—Thursday 14th November at 7pm—a wonderful opportunity to support our school to provide magical, enriching experiences for our little fish. We always welcome new members who would like to get involved.

Please do pop along to some of these events.. We would love to see you there!



INSET DAYS 2024/2025
Monday 21st October
Friday 14th February
Monday 2nd June

Dates coming up in the autumn term:

Thu 26th September 6pm	Full Governors Meeting
Mon 30th September	Y6 out to Wakehurst
Fri 4th October 850am	Cuppa and Chat—Staff Room
Wed 9th and Thu 10th Oct	Chichester Children's Book Fest Authors visiting Y1—Y6 (details to follow)
Mon 14th October	Y5 on Ancient Greece museum trip
Tue 15th 8.45am	Pufferfish Class 6 Weeks In
Wed 16th October 2.15pm	Sharks Class Phonics Workshop
Thu 17th October 12.00	Y5/6 Book Group to War Horse
Mon 21st October	INSET Day
Wed 23rd October	Harvest (bring a gift for the Food Bank)
Wed 23rd October	School Photos Day
Mon 28th Oct — Fri 1st Nov	HALF TERM
Mon 4th Nov - Thu 14th Nov	AN ARTIST'S EYE—Whole School Learning Experience
Wed 6th and Thu 7th Nov	Learning Review Meetings
Fri 8th November	An Act of Remembrance
Thu 14th November 7pm	Friends of Fishbourne School meeting



Friends of Fishbourne School (FOFS)

is made up of committed parent volunteers and teachers arranging and helping at events to raise funds for the children at school. With all school budgets nationally under such pressure, fundraising is essential to buy those 'extras' that ultimately enhance your child's learning experience. We achieve this by running many fun activities throughout the school year which the children (and parents!) enjoy, such as discos, the annual Christmas fayre, quizzes and many more events. We are entering a time of change at FOFS as we thank our chair, treasurer and secretary for their incredible contributions to our school family and look for new committee members eager to take on these roles. Look out for more information coming home soon and please do take time to consider whether you could make the world a better place to be by supporting us with this critical work.

Fishbourne Roman Palace

We are so lucky to have this fabulous facility on our doorsteps and even more fortunate to be able to use it to park safely in the mornings to get children into school. During the pandemic, we experienced life without the Roman Palace car park and how tricky it would become.

- We ask, please, when you use the Roman Palace site that you:
 - supervise your children with care at all times ensuring that they are behaving safely and respectfully
 - park in the marked bays and not in the coach park
- Thank you.

At Fishbourne CE Primary, we nurture our children to be...

