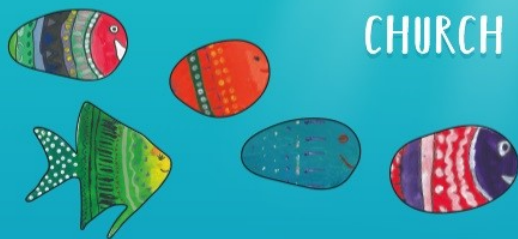




October 2023

# FISHBOURNE CHURCH OF ENGLAND PRIMARY SCHOOL



Only one you

Dear Parents,

We are now well underway into the autumn term and we are looking forward to meeting with you for Learning Reviews to reflect together about how well the children have settled in, their past attainment and their next steps. These meetings are a crucial part of working in partnership with you to do the very best we can for your children. Please do make sure you sign up and come along to find out more about what is happening in school!



## We start this newsletter with news from our Chair of Governors, Julie Barwell:

*I should like to begin with a thank you to all of you who contributed to our academy consultation last term. Your thoughtful questions and comments added a level of detail that we found enormously helpful in our final deliberations.*

*Having discussed options for over 2 years now, the consultation with all our stakeholders was the final and most important piece of the puzzle.*

*We have now held our Full Governing Body meeting when we voted to proceed with our application to the Regional Board of Education. The earliest our application will go before the*

*board is the end of October, but we cannot be certain as there are a significant number of other schools across the county who are also applying for academy status. Assuming approval is received, we are looking at between 6-9 months for contractual negotiations. We will keep you all informed as this progresses and the timeline becomes a little clearer.*

*I'm delighted to welcome two new Governors appointed during the summer term. Stuart Hammond was co-opted onto the board and brings a wealth of business and finance experience. Clare Skinner was appointed by the diocese as a foundation governor. Clare has close ties with Fishbourne church is a teacher at Chichester High School and has a son who will hopefully also join our Fishy family. We began this academic year with an away-day attended by our whole team of governors to allow us to step back and think strategically. Our focus was on reflecting on our effectiveness as a board and looking at the impact we have had and can have on the children.*

*Lastly, a huge welcome to our new families, we hope to meet some of you at the reception meeting next month when we will share a few details about the Governors' role.*

We have had a wonderful time this week welcoming visiting authors to our school as part of Chichester Children's Book Fest. This is the fourth year we have had authors visiting our school and it really does bring something very special to the autumn term for our little fish. For our youngest children, we were visited by the incredible Ed Vere and for our middle and older children, we were visited by inspiring Vashti Hardy. Children in year groups 1-6 will be gifted with a signed book written by the author who visited them. You will know how passionate we are about supporting our children to grow to love reading for pleasure and visits from authors bring a very special kind of magic to our children's lives. Both Ed and Vashti showed so much interest in our children as they signed their books which they will, if they haven't already bring home to share with families. Many of our classes will now be using the book



gifted to them by Chichester Children's Book Fest as a text that they will study with their class. Having met the authors, this gives them the best HOOK into their learning and a really special connection with their book. We are

so hugely thankful

to Chichester Children's Book Festival for their hard work on our behalf, coordinating a tremendous number of wonderful authors to be in local schools during the last week!

You may remember that we had our church school inspection a couple of weeks ago (SIAMS) and we are delighted to have received our report which has been sent home to families in full for you to enjoy reading. However, we thought it was worth taking a moment to celebrate some of the many positive observations that our inspector, Andy, made about our school:

### **Being part of the Fishbourne 'shoal' is transformational.**

*There is a clear sense of watching over one another in love, ready to act to make the world a better place. The school is a pillar of the community providing space for the uniqueness of all.*

*The culture of the school expects pupils and adults to be agents of change in God's world. The school provides a voice to pupils who readily stand up, striving to make the world a better place.*

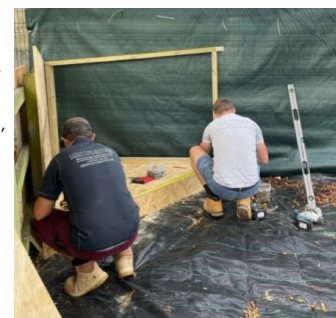
*Relationships throughout the school are deeply nourishing. Behaviour is exemplary. Where conflict occurs, it is resolved quickly with authentic forgiveness and a peaceful manner.*

*The school's expression of its vision is seen, felt and heard every day. High levels of expertise, knowledge, and skill in adults create a culture of learning in which pupils achieve well.*

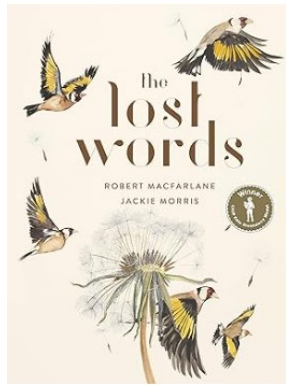
*The quality of the relationships throughout the school creates a dynamic, active, and relentless compassion for one another and for God's world.*

As a school family who so deeply value the quality of relationships, we are so thrilled that our school has been recognised in this way. A copy of the report is also be available on the school website.

You may have noticed our Forest School area is evolving all the time and yesterday we were visited by the team at **Coastal Inspired** who supported us by making a corner unit, a mini climbing / den frame and donated over £400 of materials. We are hugely grateful to the team – Jason, Chris and Sam for their hard work, time and enthusiasm. You have definitely made our world a better place to be and we are so thankful to you all! We look forward to seeing this amazing area continue to develop and evolve in the coming weeks.



**Statutory  
Inspection of  
Anglican and  
Methodist Schools  
– SIAMS**



**The Lost Words** is our next whole school learning experience coming up straight after half term! We are passionate about working in collaboration to plan whole school learning as the children hugely benefit from coming together as a school family to learn together and so too do the staff! The Lost Words is a stunning collection of poetry and illustrations collated by Jackie Morris and Robert MacFarlane. All over the country, there are words disappearing from children's lives. These are the words of the natural world; Dandelion, Otter, Bramble and Acorn, all gone. A

wild landscape of imagination and play is rapidly fading from our children's minds. *The Lost Words stands against the disappearance of wild childhood. It is a joyful celebration - in art and word - of nearby nature and its wonders. With acrostic spell-poems by award-winning writer Robert Macfarlane and illustrations by Jackie Morris,* this enchanting book evokes the irreplaceable magic of language and nature for all ages.

We will be using this learning experience to re-discover the joy of performing poetry inspired by our environment. The children will be hooked into their learning by being invited to perform a poem at our Autumnal Afternoon Tea that we will invite guests from a community to attend. During the week they will explore, perform and celebrate poetry, building towards performing a poem as a class. On Wednesday 1st November we will have an outdoor learning day through which the children will experience the awe and wonder of our local environment during autumn. We will be welcoming Fab Falconry who will give our children the opportunity to have some up close encounters with stunning birds and Brent Lodge Wildlife Hospital who will share with the children the important role they have in making our world a better place to be. On the afternoon of Monday 6th November we will fling open the doors and warmly welcome invited guests from our local community to come and share in the children's learning after enjoying afternoon tea hosted by the children in Year 6.

**This promises to be an amazing week of memorable learning and a wonderful way to start the new half term. We would like to invite families to send gifts in to school to support the amazing work of Brent Lodge—if these gifts could be sent in on Wednesday 1st November, we will ensure that they are passed on! This will give each of our little fish the opportunity to make the world a better place as a result of their learning!**

#### \*What are learning experiences?

Each learning experience is rooted in just one area of the non-core curriculum. This allows children time to explore and develop key knowledge and skills in these areas. Reading and writing underpin each learning experience and are used as tools to communicate the key concepts to a wider audience. It may be appropriate to use another area of the non-core curriculum to enrich the learning taking place but it would not be a key focus, for example using art to understand and communicate historical concepts.

An exciting and engaging **hook** into learning makes the experience simply irresistible and the children know from the outset exactly what they are setting out to achieve in the form of an **End Goal**.

A **baseline** that has been warmed up provides the opportunity to ensure that the **steps of learning** are personalised, taking into account the starting point of each child to achieve the highest possible quality outcome.

You can read so much more about this on our school website.



#### Dates for Next Academic Year

11th Oct—School Photos  
19th—Flu vaccinations  
Wed 11th and Thu 12th Oct—Learning Review Meetings  
Wed 18th Oct—CUPPA and CHAT 9am  
The Dog Trust visiting school

#### HALF TERM: Mon 23rd October—Fri 27th October

Mon 30th Oct—Fri 3rd Nov—Whole School Learning Experience  
The Lost Words  
Wed 1st Nov—Whole School Forest School Day  
Fri 3rd Nov—Bend the Rules Day  
Fri 10th Nov—School Neon Disco  
Thu 23rd Nov - Sophy Henn visiting school  
Friday 24th Nov—Quiz Night in the school hall (see poster)  
Fri 1st December – Christmas Shopping Day and Christmas Jumper Day

Fri 15th Dec—Carols Around the Tree 2.30pm

**INSET DAYS**  
**Tuesday 2nd January**



#### Brent Lodge Wildlife Hospital

#### WISH LIST – ESSENTIALS FOR THE HOSPITAL

Please drop these off at our hospital or at our charity shops, or arrange for them to be collected during an outreach visit from a member of the Brent Lodge team.

#### PATIENT FOOD:



- Tinned kitten/puppy food (non-fish)
- Tinned adult cat/dog food (non-fish)
- Dry cat kibble (not dog biscuits)
- Hedgehog kibble
- Spike's Hedgehog Food
- Fresh fruit and vegetables

#### HYGIENE & CLEANING:



- Puppy pads
- Newspapers (not shiny magazines)
- Large black bin liners
- Blue Nitrile gloves (medium & large sized)
- Paper kitchen towels
- Blue roll

#### GROUNDS CARE & ADMIN:



- Cuprinol timber-care paint (black)
- Cuprinol timber-care paint (willow)
- A4 plain paper
- 1<sup>st</sup> and 2<sup>nd</sup> class postage stamps
- C5 white envelopes

If preferred, cash donations are also incredibly welcome and will go towards funding the above resources for the animals in our care.

**THANK YOU VERY MUCH!**

Brent Lodge Wildlife Hospital, Cow Lane, Sidlesham, West Sussex, PO20 7LN  
Tel: 01243 641672 Registered charity no: 1199715

At Fishbourne CE Primary School we nurture our learners to

