

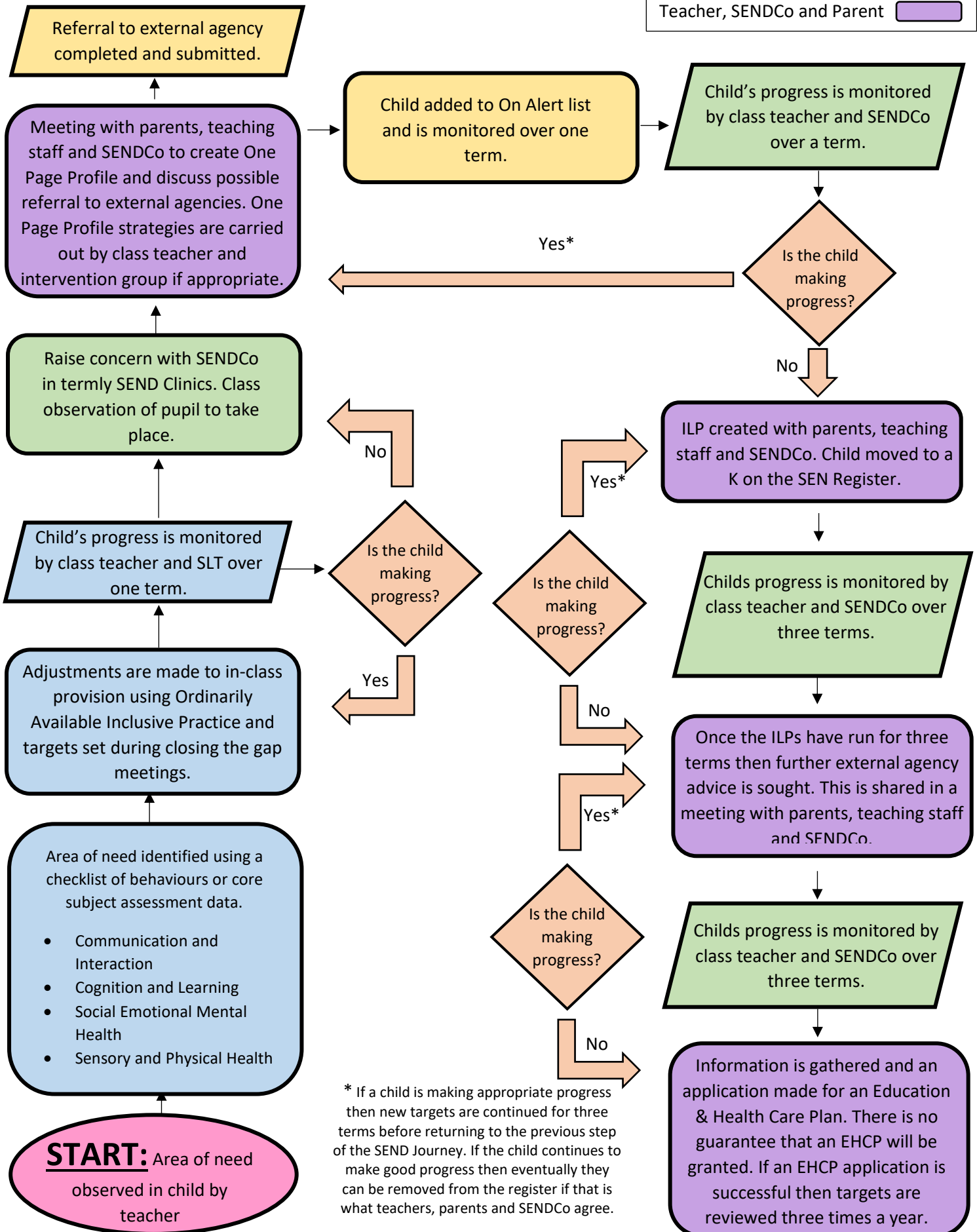


SEND Journey

(Assess, plan, do, review cycle)

Key:

Teacher		
SENCO		
Teacher & SENCO		
Teacher, SENDCo and Parent		



* If a child is making appropriate progress then new targets are continued for three terms before returning to the previous step of the SEND Journey. If the child continues to make good progress then eventually they can be removed from the register if that is what teachers, parents and SENDCo agree.