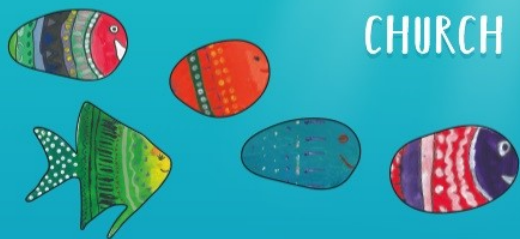




March 2023 - Where my wellies take me...

FISHBOURNE CHURCH OF ENGLAND PRIMARY SCHOOL



Only one you



Dear Families,

Our 'Where my wellies take me...' learning experience* is drawing to a close and so we thought we would share with you in a little more detail about exactly what we have been up to in school. It's been such an exciting fortnight with over fourteen trips offsite and welcoming lots of interesting visitors to our school. This learning experience was inspired by a conversation that took place between one of our children and a grown up on a walk they were on over the fields to Dell Quay with Kassie, our PAT dog, several years ago! During the conversation, it transpired that the child had no idea that they lived right on the edge of Chichester Harbour and as we reflected, we recognised that our curriculum at the time was not giving the children the opportunities to learn enough about the geography of their own area. The idea of 'Where my wellies take me...' started to grow and since then we have worked with Chichester Harbour Conservancy and the National Farmers Union to put together a whole school learning experience in which we immersed the children in understanding more about where they live.

In this geography inspired learning experience the children have spent their first week exploring the harbour and the second week exploring local farmland. Throughout this time they have reflected on the impact that humans have on our local area and persuaded visitors to take greater care of it. We are passionate that our children use their learning to make the world a better place and this learning experience provides a very real opportunity!

Chameleon Class have loved looking at maps of the school and of the village and created their own treasure maps! They are having a wonderful time focusing their learning around what they see and hear at the Harbour and the Farm! This has gone alongside a focus on the book 'We're Going on a Bear Hunt' by Michael Rosen. Our learning will come together with our very own class version of the book with everything we have experienced over the two weeks!



Cheetah Class is focusing on littering and the effect that this has on our wildlife. During the first week, we focused on exploring maps, learning about map symbols and carried out some fieldwork, collecting litter around the village. We then created our own maps of Chichester Harbour and decided where bins should be placed in order to protect the environment. For our end goal,

we are creating a persuasive poster which is going to be attached to our school fence to encourage people to stop littering and harming wildlife and farming in our village.

Crocodile Class started by asking why people visit, what they do there and what the impact of this is. We learnt lots of new vocabulary to support our discussion! Then we researched why it is important to protect our the harbour environment, and wrote a whole class letter to members of the public, to persuade them to take their rubbish home with them and not litter. On our trip to Dell Quay we LOVED helping to make the world a better place by doing a litter pick. In week 2 our learning will focus on farming in the area and specifically the benefits of eating local food for the environment.



Hippo Class have been focusing on using mapping skills - using grid references, locating important places using a key and locating places that birds migrate from and to at different times of the year. On our welly walk, we have learnt to identify different types of birds and their habitats and thought about the effect of the environment on their homes. Our end goal was to create a persuasive poster, asking

the public to keep their dogs on leads in order to protect and encourage our birds to rest, nest and feed in the local environment.

Elephant Class learned all about how terns are encouraged to return to Chichester Harbour and the threats they are faced with. The children wrote a letter to persuade our reader to stop littering in the harbour and damaging their nests. In the second week we will be learning all about farming. The children will independently write their own persuasive letters to their parents, persuading them to eat local!



*What are learning experiences?

Each learning experience is rooted in just one area of the non-core curriculum. This allows children time to explore and develop key knowledge and skills in these areas. Reading and writing underpin each learning experience and are used as tools to communicate the key concepts to a wider audience. It may be appropriate to use another area of the non-core curriculum to enrich the learning taking place but it would not be a key focus, for example using art to understand and communicate historical concepts.

An exciting and engaging **hook** into learning makes the experience simply irresistible and the children know from the outset exactly what they are setting out to achieve in the form of an **End Goal**.

A **baseline** that has been warmed up provides the opportunity to ensure that the **steps of learning** are personalised, taking into account the starting point of each child to achieve the highest possible quality outcome.

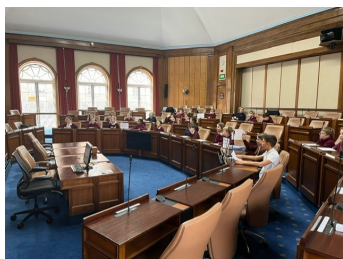
You can read so much more about this on our school website.



Penguins Class have been looking at the human impact on this natural environment. Chichester Harbour Conservancy have led us in an investigation of the threats and issues within this area. We have looked at the loss of half of the salt marshes over the last 50 years due to the coastal squeezing of this habitat. They will also be learning about the influence and impact of farming in the local area and what effect this has on the natural habitats. As

an End Goal, we are writing a persuasive letter to Dr Therese Coffey, who is the Secretary of State for Environment, Food and Rural Affairs, highlighting the current threats and with our recommendations for the future management of the harbour.

Koala Class spent their first week debating whether dogs should be banned from the coastal footpaths of Chichester Harbour, culminating in a debate at Chichester County Hall. In the second week they will consider how sustainable our local farming, water, energy and waste is, asking what impact might building more homes in Fishbourne have on our available resources? We have a housing shortage, but are we in a position to build more houses in our local area?



It's been a fortnight of incredibly engaging and interesting learning for our children, resulting in writing for a real audience with real purpose. Our children have been passionate and motivated. We look forward to checking in with them during the summer term about what they are able to remember through our Pupil Book Study activities. Look out for more information about this approach in the summer term!



CHICHESTER
HARBOUR
CONSERVANCY



This amazing fortnight of learning would not have been possible without the incredible kindness and generosity of the following groups of people:

The Chichester Harbour Conservancy: Jane Latawski, Suzanna Troy, Kate Keeping and all their volunteers.

National Farming Union: Chets Modi, Andrew Gentle, Rupert Hoare, Phil Veltom and Jodie.

The Wren Family and Scarterfields Farm

We know that it takes a village to raise a child - this learning exp. has been a real testament to that. We are so thankful to the number of people who have been so generous with their time for the benefit of our little fish and would like to extend a huge thank you!



Dates for Summer Term 2023

Fri 31st March—Break Up for Easter Holidays
Mon 17th April – First day of summer term
Fri 21st April – Odd Socks Day (marking World Down Syndrome Day)
Thu 27th April—FOFS meeting 7.30pm
Mon 1st May—Bank Holiday
Mon 8th May—Bank Holiday
Tue 9th May—Fri 12th May: Y6 SATS Week
HALF TERM: Monday 29th May—Friday 2nd June
Mon 5th June: INSET Day
Sat 17th June: Church and School Fete
Mon 19th June: Sports Day
Wed 28th June and Wed 5th July: Learning Review Meetings (more information to follow)
Wed 12th and Thu 13th July: Summer Production
Wed 19th July: Whole School Forest School Day

Spring Term Attendance

We will not be sending Attendance Letters out at the end of the spring term due to the industrial action that has impacted on our attendance data. As a result we felt it was not appropriate to send the termly overview home this spring. We will contact families individually where we have concerns about attendance.

Lost property - sadly our lost property bin is full again! Please do check for any missing uniform/coats/PE kit etc.



Barnacle (Barney) was born on the 12th February and, during the Easter holidays, he will be coming to live with Mrs Day's family. He is a cocker spaniel and it is our intention that he will spend time in school as part of our team. We have worked with two Pets As Therapy dogs over the last four years and seen for ourselves the enormous benefits that they bring with them! Our hope is that Barnacle will fit in really well to our Fishbourne family and become an integral member of the team. Introducing a dog into our school is an important commitment which has been carefully planned and understood. We will be working closely with Jenny Duckworth, Dog Mentor, to ensure that Barnacle's transition into school life is as smooth as possible. Please do look out on our school website for our policy and risk assessment for further information.



At Fishbourne CE Primary School we nurture our learners to become...

