



February 2023

FISHBOURNE CHURCH OF ENGLAND PRIMARY SCHOOL



Only one you

Reading isn't important because it helps get you good grades or a job. It's important because it gives you room to exist beyond the reality you're given. Reading makes the world better. It is how humans merge. How minds connect. Dreams. Empathy. Understanding. Escape. Reading is love in action.

Dear Parents,

As we outlined in our first newsletter of the first academic year, one of the key focus areas of our School Development Plan this year is **READING!** Underpinning our school development plan is an understanding that development is a living and breathing process, one that requires professional tinkering along the way! We are passionate about developing a strong learning and deep

thinking culture within our school community at all levels and are relentlessly optimistic about our vision for all learners at Fishbourne Primary. All areas of proposed change are explored thoroughly - researched, evidence-based and reflected upon.

As a leadership team, we spent last year exploring a number of different elements of the reading process and have identified the key ingredients of our approach to the teaching of reading. We started by looking at the very earliest stages of learning to read and identifying a synthetic phonics programme that suits the needs of children and families in our school community. The programme teaches children to read and write by introducing them to the sounds that they can hear in words (phonemes) and their written equivalent (graphemes). Children learn to blend sounds together to read words and segment words in order to spell them.



Phonics teaching provides a range of experiences for all children that are fun and interactive! This includes; reading (shared/guided), writing (word and

sentence level), activities and games to practise taught sounds. These sessions are pacy and busy, keeping children active in their learning. There is lots of opportunity for spaced repetition, not only at the beginning of every session but also in those 'spare 5 minutes' moments throughout the school day. This is a key

opportunity to develop letter formation and handwriting. During the school day there are lots of further opportunities through our sequence of writing where we have significant focus on modelled writing through which the application of phonics and tricky words will be a focus.

We set out to:

- *Foster a love of reading by listening to and interacting with a wide range of literature, non-fiction and poetry
- *Provide children with necessary life-long skills to ensure they can read confidently and with a secure understanding
- *Build a community of readers who read for meaning and pleasure by engaging with authors and community reading project
- *Provide plenty of opportunities to read for pleasure
- *Ensure reading is a transferable skill and that children are reading across the wider curriculum
- *Develop a consistent approach to reading teaching in order to close any gaps and to target the highest number of children attaining the expected standard or higher.

Our **ultimate** aim at Fishbourne is to foster a love of reading whilst providing excellent learning opportunities to enable all of our readers to read with confidence and enthusiasm. In doing so we equip our children with a strong command of the spoken and written word, and develop their love of literature through widespread reading for enjoyment and pleasure. We are driven by a determination that all children can learn to read and it is the single most important skill that will impact and shape their future lives.

Our approach to the teaching of reading evolves as the children move through the school and each class has a slightly different balance of opportunities that set out to support the children to become fluent, confident readers. Our youngest children start by doing lots of reading 1:1 before moving into smaller group reading. As they go on through school, the children read whole class texts together with each child having their own copy of the book. The children develop fluency, expression and comprehension during different parts of the Book Talk sessions. We also read across the curriculum with children constantly bumping into opportunities to read and apply their new skills in a variety of contexts! In addition, we bump into books during assembly time, story time and in a range of after school clubs.



What we are reading at the moment across school...

In Key Stage 1, our children have a picture book that they focus on during their whole class reading for a week. As they move into Key Stage 2, they have a whole class book that they read alongside a selection of complimentary non-fiction and poetry to give them a six-week block. Once a term, we use one of our whole class texts to inspire a really high quality narrative learning experience. This gives the children a great model and inspiration for their own writing that results in much higher quality writing outcomes.

Reception

Year 1

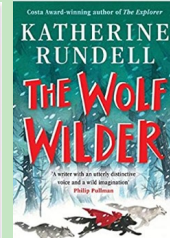
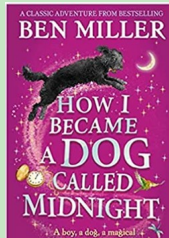
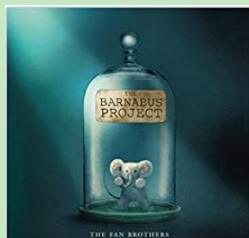
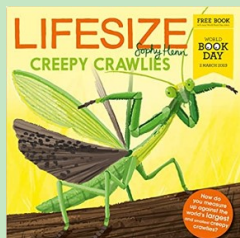
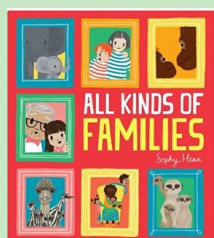
Year 2

Year 3

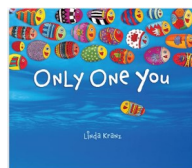
Year 4

Year 5

Year 6



Our volunteer army are a CRUCIAL part of the provision jigsaw puzzle with volunteers hearing readers across the school every afternoon. These relationships are critical in building the children as readers, talking together about books and supporting children's development. We are so grateful to the army of volunteers who come into school each week and provide our children with this wonderful opportunity.



Developing this LOVE of reading is something that we take very seriously. When you walk through the front door, you are met with books at every possible turn! In fact, as soon as children start with us at Fishbourne, they are gifted their own copy of our very special school book 'Only One You'. We have invested hugely in our selections of books for

the children to enjoy and be inspired by, thinking really deeply about exposing them to a rich array of authors and illustrators. Mrs Whitaker, our Library Champion, does an incredible job of keeping our library fresh and exciting by drawing the children's attention to many of the superb titles on offer to them by drawing together collections of story and picture books around a theme.

One of our favourite ways of doing this is through the contact we have with our incredible Patron of Reading, Sophy Henn. We approached Sophy in 2019 to ask if she would consider becoming our Patron after she published 'Super Duper You' as we loved how aligned the messages in it were to our own school ethos. Four years on and Sophy is still having a profoundly exciting impact on the children at Fishbourne Primary. The connection she has formed with the children during this time is very special and we have a unique insight into her adventures as an author illustrator.



This World Book Day, Sophy was invited to be one of the celebrated WBD authors and she has gifted each child at Fishbourne their very own copy of LIFESIZE Creepy Crawlies. We were so inspired by Sophy's Lifesize series that we invited Jaws and Claws into school to bring Sophy's



pages to life and have spent today being immersed in all things creepy crawlly!



Families often ask us if there is some way that they can contribute to our school. At Fishbourne, we LOVE to read and inspire our children to devour great books! We have our own Patron of Reading and our own Reading Newsletter - we eat, breathe and sleep books! We would love your children to grow up with the same love of books that is shared by so many of us! Keeping our library and classrooms fully stocked with books is really important and

so we invite you to donate a book to our school library if you possibly can. We will put a special bookplate into the book thanking your family for your donation to our school. We have set up an Amazon Wish List from which you can support us in this way if able to do so:

<https://amzn.eu/j1dFX85>

Meet Barnacle!
You may remember in previous news letters hearing about the imminent arrival of a litter of cocker spaniel puppies! We are delighted they have arrived safely and enormously excited that on Easter Sunday this little pup will be making his way to the south coast where he will become a very much loved member of our Fishbourne family. We will be writing separately to all our families shortly with more information about the arrangements and an opportunity for you to ask any questions you may have.



Dates for Spring Term 2023

Wed 8th - Fri 10th March - Challenge Partner Review
Fri 17th March - Comic Relief Non-Uniform Day (option to donate to Comic Relief via parentmail from Thursday 16th March)
Fri 17th March - School Discos

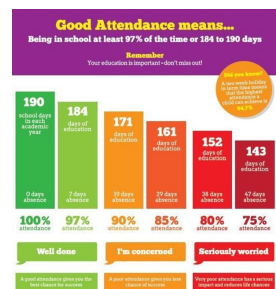
Mon 20th March—Fri 31st March - Geography based Whole School Learning Experience
Where my wellies take me!

Fri 31st March—Break Up for Easter Holidays
Mon 17th April - First day of summer term

INSET Day - Monday 5th June 2023.

Why do we send out attendance letters? We are often asked this question!

The DfE require us to report to parents their child's termly attendance and we do this because being in school is so important! We absolutely understand that children should be at home if they are not well enough to attend school BUT we need to minimise any avoidable absence for the sake of all learners in school. If you are concerned about your child's attendance and need some support, please don't hesitate to let us know and we will be very happy to help!



Arriving at school **ON TIME** is also really important for our young people... it is hard for children to arrive in school and have to go straight into a lesson where some of the teaching has already happened. The gates open at 8.45am and shut at 8.55am. Children must be in school during this ten minute window so that they can start the day with their classmates.

At Fishbourne CE Primary School we nurture our learners to become...

