



December 2022

# FISHBOURNE CHURCH OF ENGLAND PRIMARY SCHOOL



Only one you

## TEAMWORK makes the DREAM Work

Dear Parents,

What a wonderful way to end the autumn term at Fishbourne CE Primary School! We have had so many lovely events taking place in school over the last couple of weeks and it has been brilliant to be able to welcome families to school to enjoy sharing these with us! Each of these events has been made possible through a lot of hard work, on the part of

volunteers, staff, members of our local community and all the children. Our learning behaviour 'collaboration' has been the key and never have we been more aware that team work makes the dream work. Our hugest thanks to everybody who has contributed to making a dreamy end of term for our little fish. It has been amazing!

Our Christmas festivities really started with our Advent Service which took place on the last day of November in the church, led by Jess. Jess' first Christmas was very special and she was joined by our Worship Team in planning and taking the service. The choir performed exceptionally well and we were treated to some stunning solos. It was the first time we had been back to church since the pandemic and we had our usual last minute worries about whether we would squeeze everyone in and, as ever, miraculously we did! The children were beautifully behaved and we came back to school with our Advent wreath which we have continued to light at the beginning of each assembly.

The same choir members set out to make the world a better place to be by visiting Cornelius House and sang their hearts out. It was lovely to share the children's gifts this way over the Christmas build up.



Friends of Fishbourne School organised the lovely annual opening of Elfridges, an opportunity for the children to buy gifts for their families and get them wrapped before Christmas! This is always such a lovely event and enjoyed so much by the children. It wouldn't be possible without the generosity of our volunteers giving their time and energy!

It brought us so much joy to welcome our friends and neighbours back into school this year for our annual community tea party! The children look forward to this event very much and it is the most lovely way to spend time enjoying one another's company. This is one of the ways our youngest children live out our vision to 'make the world a better place' following one of their Christmas learning experiences and they really get a sense of this.



It was absolutely wonderful to welcome back CYE to take our Christmas assembly! We love CYE and everything about them... our little fish in Year 5 and 6 really value bumping into the young leaders who they meet during their residential visits at the beginning of the autumn term. The young leaders share their faith with our little fish and this is really powerful for our children to see

and experience for themselves. This year they told the Christmas story from the perspective of the animals and a rather unexpected Kangaroo who the children adored! The young leaders were brilliant in their retelling of the story and our little fish loved every moment! Huge thanks to them for all their hard work.

We love Sophy Henn's visits and there is always a great deal of excitement in the build up! This visit was no exception. Sophy came and spent the afternoon in school during which time she shared with us some seriously exciting updates about new books soon to be published - including her World Book Day title Lifesize Creepy Crawlies and her newest Lifesize - Deadly Animals! The children saw some of the early print runs which was very exciting. We also saw the cover reveal (which we can't share yet!) for the final Pizazz and it is really very special!

After all that excitement, the children in Key Stage 1 came back to school with their families (and many of our lovely governors!) to enjoy Bedtime Stories with Sophy. Mugs of hot chocolate in hand, they snuggled under the twinkly lights and enjoyed some fabulous stories with Sophy. The hall looked magnificent thanks to one of our very talented families who popped in to give it a make over before the children returned. What a magical day! Our hugest thanks, as ever go to Sophy for making our school a much better place to be!

We were lucky to have a dry and sunny day for our nativity play yesterday but it was bitterly cold! The children were INCREDIBLE and performed their socks off! Didn't they do well?

Christmas time over the last two years has been dominated by the pandemic and meant that many of our children have missed the opportunity to be part of the telling of the Christmas story. This year we wanted to give our children a magical memory to treasure of their time at Fishbourne Primary and set out to plan our most special celebration yet. What better than a live nativity play, involving all our children and a sprinkling of animals, telling the Christmas story in the grounds of our school and the Roman Palace. It was such a wonderful setting and made even more magical with the three alpacas to accompany the Kings from Dunreith and donkeys from The Hayling Island Donkey Sanctuary.





I'm Mthrs Jessica Reid, your parish priest, and one of the best things about my job is being part of your school community. As well as leading a weekly assembly, and helping Mrs Rinaldi to lead Worship Team, my role at the church means that I'm a Foundation Governor at Fishbourne School. Although the Foundation Governors have a special responsibility for our Christian ethos, we also sit on different committees, depending on our interests and the school's need. I sit on Pupil Outcomes Committee, where the teachers and Governors focus together on ensuring that your children's progress is championed, and the staff are supported in all the brilliant work they're doing to help your children reach their full potential. This year I'm also keeping an eye on Phonics; the teachers are putting so much energy into helping your children become confident and independent readers and writers, and the new Phonics scheme is an essential part of this. I enjoyed joining some of you for the Phonics Workshops led by Mrs Harris (though she says I was there with an ulterior motive; to support my 4 year old's learning!) We're really lucky in Fishbourne to have such a supportive school community who live and breathe the school's vision, as they share their gifts with the wider village.

### News from the Palace...

We are delighted to be teaming up with Fishbourne Primary School and reaching out to our local community more. My name is Sarah and I started as the palace's new Property Manager during the summer. I look forward to working more closely with you all!

I hope that this news update from the palace will be part of a regular forum. As you may be aware, Fishbourne Roman Palace is a registered charity. All of our profits are then ploughed back into our site to keep it going for future generations. Our existence, however, hugely depends on working closely with our local community

**Discount in our Café** We would like to offer all parents and families who attend the school a 10% discount in our Café. Please bring an official letter or ID and show it to a member of staff

**Café Opening** We are conscious that there is not a café in the village. Every Friday during November and December we are opening early from 0830. We have also decided to keep our café open Mon-Fri until mid-December. Please pop in for a winter warmer! We have a new Café Manager and team who will be expanding our menu over the coming months. Any suggestions please let Andy our Café Manager know.

**Gift Aid** We have simplified our admissions procedure. We now offer one admission price, which includes a Gift Aid donation for UK taxpayers. This helps with our fundraising efforts, so that we can claim (10% in every £1) back from the government. In return, we offer all our lovely Gift Aid ticket holders unlimited free admission for 12 months to the palace. We hope this will encourage repeat visits and our local community to support us.

**Roman Gardening Club** We are looking for volunteers to join us to help care for Britain's oldest planted garden. Get out in the open air, meet new friends, learn a skill and improve your mental health and wellbeing. We also have many other volunteer opportunities, pop in and find out more or email us direct.

**Staff Vacancy – join our team!** We are currently recruiting for a weekend part-time palace cleaner. For more information, please see:

[Job Vacancies - Sussex Past](#)

Our huge thanks go to all the staff at the Roman Palace for enabling our nativity play to take place in their beautiful grounds. It was really lovely to be able to share this space and for our children to benefit from performing in such a special place!

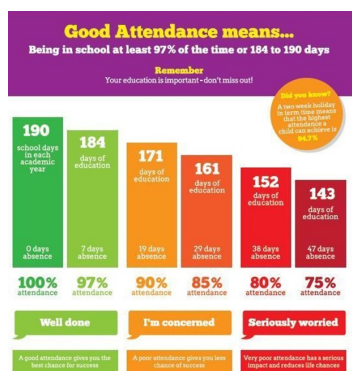


### Dates for Autumn Term 2022

Fri 16th Dec: Christmas Jumper Day and Carols Around the Tree 2.30pm  
Fri 16th Dec: Break up for the Christmas holidays

Tue 3rd January: First day of the spring term  
Thu 12th January - KS1 to Stick Man  
Mon 20th March—Fri 31st March - Whole School Learning Experience  
Where my wellies take me!

Other INSET Days next academic year will be on  
Monday 20th February 2023 and Monday 5th June 2023.



### ATTENDANCE MATTERS!

This week you will have received a letter informing you of your child's attendance during the autumn term. Please do look at this letter carefully.

As we enter the new year, we urge you please not to book holidays during term time. These impact on both your own child and other children in your child's class. Each term, we review attendance and if your child's attendance is less than 95% we will ask you please to book an appointment to come in and discuss this with one of our team in school.

We wish all of our families a very happy Christmas and positive start to the new year. We look forward to welcoming you back to school on Tuesday 3rd January.



The build up to Christmas is always special in school but our special Countdown to Christmas event with many members of our staff team sharing their favourite Christmas story was a real treat!

Each day, a new story has been added to our school website for families to enjoy together at home. These will be available throughout the school holidays too should you like to make use of them. The daily reveal gave children something lovely to look forward to. Our huge thanks to Miss Baldwin for coordinating this and Mrs Gregory for putting together the stunning display.

At Fishbourne CE Primary School we nurture our learners to become...

