



September 2022

FISHBOURNE CHURCH OF ENGLAND PRIMARY SCHOOL



Only one you



Dear Parents

A really warm welcome back to a brand new school year. We hope you had a good summer break with your families and enjoyed time together. Lots of us have chatted on the path about how positive it feels to get back into routine (and we noticed one or two cheers from exhausted parents as the gates opened for the first time!). We will all feel differently about the new term but we are DELIGHTED to welcome you all back and can't wait to enjoy a year of adventures with you all. It is lovely to hear the buzz around school again and to see the children settling quickly into their new classes.

Welcome to our new Chameleon class and all their families! It is an absolute privilege to welcome you into our school family where we hope you will quickly feel settled and valued members of our learning community. We look forward to welcoming you to lots of exciting events over the autumn term. Welcome also to other children who have joined us in Year 6, 3 and 1 this year.



We have had a busy and exciting start to our new academic year. In every class there has been a very specific focus on getting to know one another and building relationships between staff and children. We know that these relationships are critical to getting learning right for our little fish and helping them feel confident and settled in their classrooms. We know that meaningful learning takes place when we have meaningful relationships. This year, we are bringing our first set of Learning Review meetings forward to before the half term break so that we can meet with you to reflect on your children's learning and be clear about their next steps moving forward.

Our two oldest year groups have taken building relationships to a whole new level by going away together! Year 5 children have enjoyed a night at CYE and Y6 children a week at Fairthorne Manor. These are wonderful opportunities for our young people to make memories, to collaborate and enjoy spending time together. They remember these visits so fondly in the years to come. We are hugely thankful to our incredible staff team who work incredibly hard to facilitate these visits for our little fish, leaving their own families to care for yours!

The first week of term also marked the death of the Queen. We would just like to remind you about a couple of resources you may find helpful:

https://www.bbc.co.uk/newsround/news/watch_newsround
<https://www.booktrust.org.uk/booklists/g/grief-and-loss-5-8-year-olds/>

We also have a lovely collection of books available in our Wellbeing Library.



At this time of year, we always like to share with you our key priorities for developing our school. At Fishbourne Primary, we recognise that change doesn't happen overnight! Underpinning our school development plan is an understanding that development is a living and breathing process, one that requires professional



tinkering along the way! We are passionate about developing a strong learning and deep thinking culture within our school community at all levels and are relentlessly optimistic about our vision for all learners at Fishbourne Primary. All development builds towards achieving the very best approach to learning (pedagogy) we can. Our three core priorities this year are:

**To deliver high quality phonics teaching across the school that leads to increased automaticity and decreased cognitive load for children as readers and writers, resulting in accelerated progress.*

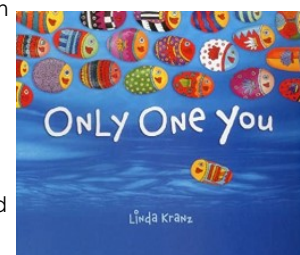
**To deliver consistently high quality teaching of reading across school that immerses children in high quality texts prior to the teaching of narrative inspired writing learning experiences.*

**To equip subject leaders with the skills to quality assure the non-core curriculum through Pupil Led Book Study that allow them to assess the impact of teaching and learning and leads to change in practice informed by cognitive science*

If you are interested to know more about any of these priorities, you can read about them on our school website:

<https://www.fishbourneprimary.co.uk/page/?title=School%26%20Development+Plan&pid=44>

Our theme for collective worship this term is ONLY ONE YOU which is, as you will know, a key part of our vision for the children and families who come to Fishbourne CE Primary School. We look forward to welcoming regular visits from Mother Jessica, Andy Morgan - youth minister at Chichester Baptist Church and Bishop Luffa. This half term, we also look forward to welcoming The Sanctuary, Chichester, to a special assembly when we will present them with the copies of Only One You that we raised money for during our fundraising projects last year. Our prayer for this term is:



Father God,
Thank you for making me just the way I am.
Help me to use my talents and gifts to make the world a better place to be.
Amen.



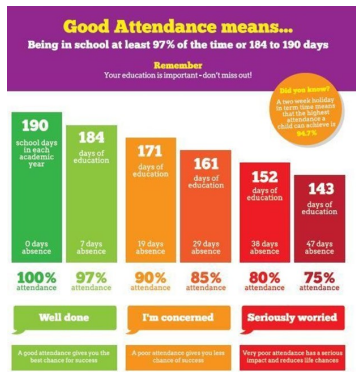
Following a week of learning about all elements of leadership in school, our Year 6 children have arrived safely at Fairthorne Manor where they will be putting our school learning behaviours into practice as they take on new challenges! We wish them all a very happy, safe and sunny time away!

New academic year resolutions that would really make a BIG difference to our little fish...

Attendance in school REALLY matters, more than ever before.

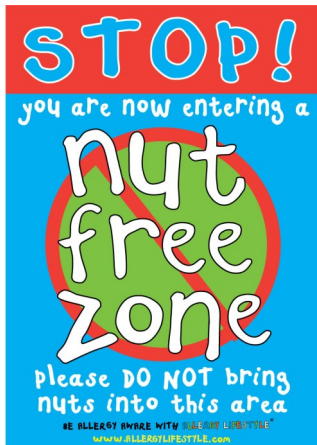
As we look to the new school year we URGE you not to book holidays during term time. Taking your child out of school does not impact just on your own child's learning but on that of others too. Our overall attendance this academic year is 94.9% and this is below the ~acceptable level set by the Department of Education.

Absence impacts on your child, other people's children, staff wellbeing and our school's reputation. Please support us in school by only keeping your children away from school if they are poorly.



During the pandemic, we introduced a wellbeing library for families to make use of. This is located in our school entrance hall and contains a wealth of beautiful books to support conversations around worries, anxiety and bereavement. We have a sign-out book for you to use and we ask that you return the books so that they are there for other families to make use of too!

We will shortly be adding a new category of parenting books to this collection which we hope our families will find useful.



We have four children in school with nut allergies serious enough to require them to have an epi-pen. Allergic reaction can occur as a result of **digestion, inhalation or any other contact** with nut-based products. For their safety, no nut-based products should be brought into school. This is a reminder, please do not send your child into school with any nut-based product for a snack or packed lunch – this includes products that may contain traces of nuts. It is important that you check the labelling of food products before sending your child in to school with them – it is not always apparent that products

contain nuts or traces of nuts.

If your child is poorly and not able to attend school, please phone into school and leave a message on the absence line or speak to the school office by 9am - it means we know your child is safe and sound at home and we don't waste valuable time trying to get hold of you or your contacts. If we are not able to make contact with you, we have to refer on to the police or social care to raise a concern about your family's safety. We do this because we have a duty of care to your children.



Update Parentmail: It is the parents responsibility to update contact details on parentmail. If you change your email and/or mobile number please log into your account and update. Many thanks



Last year, we launched our new behaviour for learning and life policy. Help your children to be **READY** to come to school by:

- making sure that they go to bed early enough to ensure that they have plenty of sleep,
- have breakfast before coming to school
- arriving in school on time for the beginning of the school day (8.45am)
- wearing the correct uniform. Please ensure your children are wearing black school shoes (not boots or trainers)

Meet the Teacher Meetings:

are an opportunity to meet the team who are teaching your children and hear about some of the learning that will be taking place in the classroom. Working in partnership is incredibly important as we continue to get back on track following the pandemic. Please do attend these meetings if you can.

EYFS - Thursday 29th September at 8.45am
Y1 - Wednesday 14th September at 2.45pm
Y2 - Thursday 15th September at 2.45pm
Y3 - Wednesday 21st September at 2.45pm
Y4 - Friday 23rd September at 2.45pm
Y5 - Monday 12th September at 2.45pm
Y6 - Tuesday 20th September at 2.45pm

Dates for Autumn Term 2022

Mon-Fri 12-16 Sep—Y6 on residential to Fairthorne Manor

Mon 19th Sep - Bank Holiday

Wed 21st Sep—Safeguarding training for volunteers

Wed 28th Sep—Harvest Assembly (more details to follow)

Fri 30th Sep—open morning for prospective parents

Wed 12th Oct: Learning Review Meetings

Mon 17th Oct: INSET DAY

Wed 19th Oct: Learning Review Meetings

Mon 24th—Fri 28th Oct: HALF TERM

Thu 3rd Nov: Phonics Workshop for parents of children in EYFS, Y1, Y2, Y3

Thu 10th Nov - KS2 go to London to see The Lion, The Witch and The Wardrobe

Fri 11th Nov—Remembrance Service

Wed 30th Nov - Advent Service

Fri 16th Dec: Carols Around the Tree 2.30pm

Monday 19th September 2022 -

Bank holiday announced for Her Majesty Queen Elizabeth II's State Funeral - school will be closed that day

Just to confirm that Monday 19 September will now be a bank holiday to coincide with Her Majesty Queen Elizabeth II's State Funeral, the bank holiday is to mark the last day of the period of national mourning School will therefore be closed next Monday, 19th September.

Other INSET Days next academic year will be on Monday 20th February 2023 and Monday 5th June 2023.

AT FISHBOURNE CHURCH OF ENGLAND PRIMARY SCHOOL, WE NURTURE OUR LEARNERS TO BECOME...

